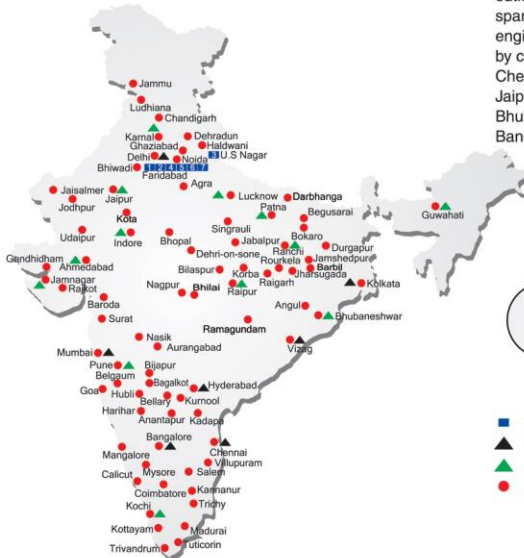


## ALL INDIA NETWORK



### SPARE PARTS & SERVICE

ACE has all India Sales and Service network operating out of all the major cities. These outlets are fully equipped to provide genuine spare parts and services by company trained engineers. These outlets are further supported by company officials based at Delhi, Mumbai, Chennai, Kolkata, Ahmedabad, Surat, Pune, Jaipur, Chandigarh, Ranchi, Raipur, Indore, Bhubneshwar, Lucknow, Jamnagar, Hyderabad, Bangalore, Guwahati, Patna, Vizag & Cochin.

**CUSTOMER CARE**  
TOLL FREE No  
**1800 1800 004**

- WORKS
- ▲ REGIONAL OFFICES
- ▲ AREA OFFICES
- SALES AND SERVICE DEALERS

### MARKETING H.Q.

5th Floor, "TDI Center", Jasola, New Delhi - 25  
Ph.: +91-11-40549900 (30 Lines), Fax: 40549922  
E-mail: marketing@ace-cranes.com, works@ace-cranes.com

### REGISTERED OFFICE

Dudhola Link Road, Dudhola, Palwal-121102, Haryana  
Ph.: +91-1275-280111, Fax: +91-1275-280133  
CIN : L74899HR1995PLC053860

### MUMBAI OFFICE

31, "Kalpataru Court", Chembur, Mumbai - 74  
Ph.: +91-22-25206846, 25207070, Telefax: 25207071  
E-mail: acemumbai@ace-cranes.com

### KOLKATA OFFICE

"Forma Towers" 84-A, Second Floor, A/JC Bose Road, Kolkata - 14, Ph.: +91-33-65012050  
E-mail: acekolkata@ace-cranes.com

### CHENNAI OFFICE

1st Floor, "Alta Regency", 165, Eldams Road, Alwar Pet, Chennai - 18  
Ph.: +91-44-24314253, Telefax: 24314252  
E-mail: acechennai@ace-cranes.com

# ACE

# F-160

### Hydraulic Mobile Crane

Capacity : 16 tonnes  
Engine Power : 101 bhp.

Rough terrain and rugged, 4x4 articulated pick 'n' move crane with front mounted cabin.

**ACE** INDIA'S NO. 1  
MOBILE & TOWER CRANE CO.

- Front mounted ergonomically designed Cabin
- Improved kinematics with low Center of Gravity
- Slotted boom
- Self Adjusting hook block
- Fail safe air brakes
- Better creep speed
- Four wheel drive



*Nothing beats an ACE*



www.ace-cranes.com



# ACE

Action Construction Equipment Ltd.

Contact:



ACE reserves the right to alter any specifications without prior notice. Dimensions, weights & capacities mentioned herein are variable by +/- 5%. Accessories if shown are not part of the Standard Equipment.



## Specifications

## F-160

<b>LIFTING CAPACITY</b>	16 Tonnes
<b>ENGINE</b>	Ashok Leyland ALHT4CTIC3/1 (BS3 CEV), 4 Cylinder water cooled, Turbo charged and After Cooled engine OR Suitable TATA Equivalent engine
<b>Max. Rating</b>	101 HP (74.3 KW) at 2200 RPM
<b>TRANSMISSION</b>	Heavy Duty Synchromesh with 8 Forward and 2 reverse speeds with high low range selector.
<b>Axles</b>	Front axle is rigidly mounted on the chassis and Rear axle is mounted with 2 Nos. leaf Springs.
<b>Drive</b>	2 / 4 Wheel drive.
<b>Clutch</b>	Heavy Duty, single, dry friction type hydraulic clutch.
<b>Top Speed</b>	40 KMPH on even metaled Road (without load)
<b>Gradeability</b>	40 % (unladen)
<b>STEERING</b>	Hydraulically operated steering wheel with 45° Articulation on either side and turning radius of 7.5 Mtrs (approx) on outer rear wheels.
<b>BRAKES</b>	Pneumatically operated dual circuit brakes on Front and Rear wheels. Parking brake is pneumatically operated spring actuated fail safe type.
<b>HYDRAULIC SYSTEM</b>	<ul style="list-style-type: none"> <li>Intra Vane type Main Pump. Three spools control valve with built in Relief Valve.</li> <li>Suction line has 100 mesh size Strainer while return line is fitted with 25 micron full flow filter.</li> <li>Two double acting lift cylinders, one double acting extension cylinder and two double acting steering cylinders.</li> </ul>

<b>TELESCOPIC BOOM</b>	4 part slotted boom, 2 part hydraulically operated & synchronized and 4th part power extended
<b>BOOM LUFFING Range</b>	- 4° to + 64°
<b>HOIST</b>	Winch is driven by hydraulic motor and fitted with rope tensioner. Hoisting is provided through self adjusting hook block employing 4/6 falls of 13 mm dia rope
<b>Hoist Speed</b>	55 Mtr/Min (Line Speed)
<b>ELECTRICAL SYSTEM</b>	24v, Negative earth.
<b>TYRES</b>	11.00 x 20 - 16 PR (8 Nos.)
<b>Wheel Base</b>	3800 mm
<b>Wheel Track</b>	1825 mm
<b>SAFETY</b>	<ul style="list-style-type: none"> <li>Hose Failure Protection</li> <li>Audio Over hoisting Indication</li> <li>Safety Brakes on Hoist</li> <li>Self-Adjusting Hook Block</li> <li>Front and rear wheel guards</li> </ul>
<b>STANDARD EQUIPMENT</b>	<ul style="list-style-type: none"> <li>ROPS fully enclosed wide view cabin.</li> <li>Front and Rear work lights</li> <li>Reflectors and rear view mirror</li> <li>Tool kit.</li> <li>Cabin Fan</li> <li>Wiper Motor</li> <li>Gauges :-                             <ol style="list-style-type: none"> <li>Water Temperature.</li> <li>Engine Oil Pressure.</li> <li>RPM meter cum hour recorder.</li> <li>Air Pressure</li> </ol> </li> <li>Rear view camera</li> <li>Front Outriggers</li> </ul>
<b>OPTIONAL EQUIPMENT</b>	<ul style="list-style-type: none"> <li>Fly jib (1.25 Tonnes Max. Capacity)</li> <li>Spark arrestor</li> <li>Safe load indicator/ LMI</li> <li>Over Hoist hydraulic cutoff</li> <li>Fire extinguisher</li> <li>Beacon Light</li> <li>Cabin Front Glass Protector</li> <li>Helper / Slinger Seat</li> <li>Drag Winch</li> </ul>
<b>OPERATING WEIGHT</b>	
<b>Front axle</b>	6035 Kgs.
<b>Rear Axle</b>	10200 Kgs.
<b>Total Weight</b>	16235 Kgs.

# F-160



**1 ROPS CABIN**  
Front mounted, ergonomically designed Cabin for better visibility and driveability.



**2 GROUND CLEARANCE**  
High ground clearance of 300mm for easier rough terrain operation.



**3 OUTRIGGERS**  
Front Outriggers for added safety during high lift operations.



**4 INCREASED VISIBILITY**  
Bigger size front windshield and re-routing of hoses provide much better front visibility.



**5 ENGINE**  
Best in class Ashok Leyland /TATA 4 Cylinder engine having nation wide service support and spare parts availability.



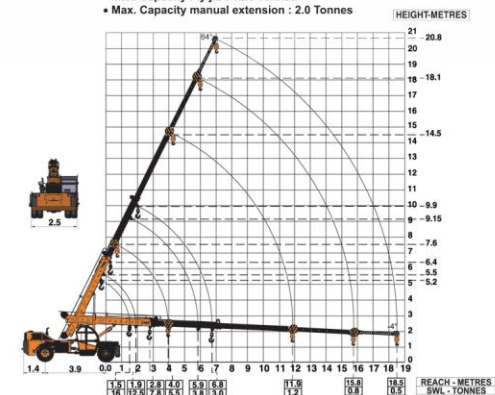
**6 OPTIMIZED KINEMATICS AND LOW C.G.**  
F-160 crane has been evolved/ designed keeping in mind operational safety parameters with low Center of Gravity (C.G.) providing best in class stability



**7 EASY MAINTENANCE**  
The engine is easily accessible for daily maintenance checks including battery, air filter, oil dipstick and cooling system

### F-160 Crane with 4 part boom

- Max. Capacity Fly jib : 1.25 Tonnes
- Max. Capacity manual extension : 2.0 Tonnes



NOTE: • Rated loads are on the basis of operation on firm and level surface.  
• Full rated lifting capacity available in articulated / steered condition.